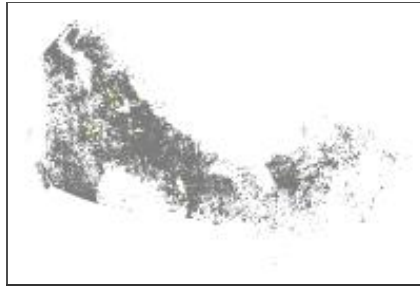


NFDB_poly_20200811

Shapefile



Tags

forest fires, wildland fires, wildfires, fire perimeter, burned area, fire history, natural disturbance, Canada

Summary

The Canadian National Fire Database (CNFDB) Fire Point and Polygon Data is a collection of forest fire locations and fire perimeters as provided by Canadian fire management agencies including provinces, territories, and Parks Canada. The forest fire data contained in the CNFDB have a wide range of uses including national scale mapping, statistical and spatial analysis and research involving natural disturbance.

Note that the "large fire" version of the database includes only large fires greater than 200 hectares (as reported by agency) — these represent a small percentage of all fires but account for most of the area burned (usually more than 97%).

Description

The Canadian National Fire Database (CNFDB) Fire Point and Polygon Data is a collection of forest fire locations and fire perimeters as provided by Canadian fire management agencies including provinces, territories, and Parks Canada.

To create the Canada-wide product, the data collected from each agency are projected into a common format and combined with data from other agencies; attribute fields are standardized; agency specific attribute fields are removed; and polygon areas are calculated using GIS.

Note that the data contained in the CNFDB are not complete nor are they without error. Locations are approximate. Not all fires have been mapped, and data accuracy varies due to different mapping techniques. This collection includes only data that has been contributed by the agencies. Data completeness and quality vary among agencies and between years.

For analyses for a single province or territory or for Parks Canada, we suggest you contact the appropriate agency. Links to the agency web sites can be found <http://cwfis.cfs.nrcan.gc.ca/ha/nfdb>, or can be found through the Canadian Interagency Forest Fire Centre (CIFFC) website at <http://www.ciffc.ca>

The database is a large collaborative effort by all Canadian fire agencies. We thank the many individuals who contributed to this effort, including fire crews, field personnel, photo interpreters, pilots, digitizers, and analysts. Compilation of the Canada-wide database was partially supported by the Canadian government programs of ENFOR (ENergy from the FORest), the Program on Energy Research and Development, the Climate Change Action Fund, and Action Plan 2000.

Please note that an End-User Agreement is required for accessing these data. Please refer to

this agreement for information regarding restrictions of use --
https://cwfis.cfs.nrcan.gc.ca/downloads/EUA/End_User_Agreement_EN.html.php

Note that the "large fire" version of the database includes only large fires greater than 200 hectares (as reported by agency) — these represent a small percentage of all fires but account for most of the area burned (usually more than 97%).

=====
=====

CNFDB – Agency Data contains polygon data for the following agencies and years:

- BC 1917-2019
- AB 1931-2019
- SK 1945-2019
- MB 1928-2019
- ON 1963-2019
- QC 1973-2019
- NS 1976-2019
- NB 1980-2013
- NL 1980-2016
- YT 1946-2019
- NT 1965-2019
- PC 1923-2015

(Note: more details regarding sources and updates under Resource Details-Supplemental Information)

=====
=====

Les données ponctuelles et polygonales de la BNDFFC sont recueillies auprès des agences de gestion des feux de forêt, y compris celles des provinces et territoires et Parcs Canada. Pour obtenir un produit pancanadien, les données recueillies auprès de chaque agence sont projetées dans un format commun et combinées aux données d'autres agences, les champs d'attributs sont normalisés, les champs d'attributs propres à une agence sont supprimés, et la superficie des polygones est calculée à l'aide d'un SIG.

Il est à noter que les données contenues dans la BNDFFC ne sont ni exhaustives ni sans erreur. Tous les feux n'ont pas été cartographiés, et l'exactitude des données varie selon les différentes techniques de cartographie. Cette base de données ne contient que les données fournies par les agences. L'exhaustivité et la qualité des données peuvent varier d'une agence et d'une année à l'autre.

Pour obtenir des analyses à l'égard d'une province ou d'un territoire unique ou de Parcs Canada, communiquez avec l'agence responsable appropriée. Les liens aux sites Web des

agences sont disponibles via le [Centre interservices des feux de forêt du Canada \(CIFFC\)](#).

Cette base de données est le fruit d'un travail de collaboration entre tous les organismes de lutte contre les incendies du Canada. Nous remercions tous ceux qui ont contribué au projet, notamment les équipes de pompiers, le personnel de terrain, le personnel de photo-interprétation, les pilotes, les responsables de la numérisation et les analystes. Le travail de compilation de cette base de données à l'échelle canadienne est appuyé par les programmes canadiens ENFOR (Programme de l'énergie forestière) et PERD (Programme de recherche et développement énergétique) et par le Fonds d'action sur le changement climatique et le Plan d'action 2000.

Veuillez noter que vous devez accepter les conditions de l'Entente d'utilisation de la Base nationale de données sur les feux de forêt pour pouvoir accéder aux données. Cliquez sur le lien suivant pour consulter le texte de cette entente et connaître les restrictions concernant l'utilisation des données

https://cwfis.cfs.nrcan.gc.ca/downloads/EUA/End_User_Agreement_FR.html.php

Credits

The database is a large collaborative effort by all Canadian fire agencies. Links to the agency web sites can be found <http://cwfis.cfs.nrcan.gc.ca/ha/nfdb>, or can be found through the Canadian Interagency Forest Fire Centre (CIFFC) website at <http://www.ciffc.ca>.

We thank the many individuals who contributed to this effort, including fire crews, field personnel, photo interpreters, pilots, digitizers, and analysts. Compilation of the Canada-wide database was partially supported by the Canadian government programs of ENFOR (ENergy from the FORest), the Program on Energy Research and Development, the Climate Change Action Fund, and Action Plan 2000.

When using these data for mapping activities and analysis, research, evaluation or display, please acknowledge the source using the following citation: Canadian Forest Service. 2020. Canadian National Fire Database – Agency Fire Data. Natural Resources Canada, Canadian Forest Service, Northern Forestry Centre, Edmonton, Alberta.
<https://cwfis.cfs.nrcan.gc.ca/ha/nfdb>.

Use limitations

The Data shall only be used for mapping activities and analysis, research, evaluation and display. The End-User agrees not to misrepresent or falsely modify the Data in any way. When the Data is displayed, in print, electronically, or otherwise, the source (i.e., Natural Resources Canada) must be acknowledged with the following citation: Canadian Forest Service. 2020. Canadian National Fire Database – Agency Fire Data. Natural Resources Canada, Canadian Forest Service, Northern Forestry Centre, Edmonton, Alberta.
<https://cwfis.cfs.nrcan.gc.ca/ha/nfdb>.

Please note that an End-User Agreement is required for accessing and using these data. Please refer to this agreement for information regarding restrictions of use
<https://cwfis.cfs.nrcan.gc.ca/downloads/EUA/End_User_Agreement_EN.html.php>

Note that the following agencies request reference to their specific data license agreements:

- BC- The BC fire perimeter data is published by the BC Ministry of Forests, Lands and Natural Resource Operations - BC Wildfire Service Licensed under Open Government License - British Columbia <<http://www2.gov.bc.ca/gov/content/governments/about-the-bc-government/databc/open-data/open-government-license-bc>>
- ON- The Ontario fire data has been produced by Natural Resources Canada under

Licence with the Ontario Ministry of Natural Resources © Queen's Printer for Ontario, 2020;

- QC-The Quebec open data licence agreement is available here
<<https://www.donneesquebec.ca/fr/licence/#cc-by>>

Extent

West -151.475479 **East** -31.073202
North 74.338657 **South** 36.018333

Scale Range

Maximum (zoomed in) 1:5,000
Minimum (zoomed out) 1:150,000,000

ArcGIS Metadata ►

Topics and Keywords ►

THEMES OR CATEGORIES OF THE RESOURCE biota, boundaries, environment, location

* CONTENT TYPE Downloadable Data
EXPORT TO FGDC CSDGM XML FORMAT AS RESOURCE DESCRIPTION No

PLACE KEYWORDS Canada, Alberta, British Columbia, Manitoba, New Brunswick, Newfoundland And Labrador, Northwest Territories, Nova Scotia, Nunavut, Ontario, Prince Edward Island, Quebec, Saskatchewan

THEME KEYWORDS forest fires, wildland fires, wildfires, fire perimeter, burned area, fire history, natural disturbance

Hide Topics and Keywords ▲

Citation ►

* TITLE NFDB_poly_20200811
ALTERNATE TITLES National Fire Database - Agency Polygon Data
CREATION DATE 2018-07-26 00:00:00
PUBLICATION DATE 2018-07-26 00:00:00

EDITION DATE 2018-07-26

PRESENTATION FORMATS * digital map

COLLECTION TITLE Canadian National Fire Database

OTHER CITATION DETAILS

When using these data for mapping activities and analysis, research, evaluation or display, please acknowledged the source using the following citation: Canadian Forest Service. 2019. Canadian National Fire Database – Agency Fire Data. Natural Resources Canada, Canadian Forest Service, Northern Forestry Centre, Edmonton, Alberta.

<http://cwfis.cfs.nrcan.gc.ca/ha/nfdb>.

[Hide Citation ▲](#)

Citation Contacts ►

RESPONSIBLE PARTY

INDIVIDUAL'S NAME John Little
 ORGANIZATION'S NAME Government of Canada; Natural Resources Canada; Canadian Forest
 CONTACT'S POSITION Spatial Data Analyst
 CONTACT'S ROLE custodian

CONTACT INFORMATION ►

PHONE

VOICE 825-510-1166

ADDRESS

TYPE physical
 DELIVERY POINT 5320-122 Street
 CITY Edmonton
 ADMINISTRATIVE AREA Alberta
 POSTAL CODE T6H 3S5
 COUNTRY CA
 E-MAIL ADDRESS john.little@canada.ca

[Hide Contact information ▲](#)

[Hide Citation Contacts ▲](#)

Resource Details ►

DATASET LANGUAGES * English (CANADA)
 DATASET CHARACTER SET utf8 - 8 bit UCS Transfer Format

SPATIAL REPRESENTATION TYPE * vector

SUPPLEMENTAL INFORMATION

Version notes regarding data updates and sources:

BC:

- BC fire data updates downloaded from DataBC website <http://apps.gov.bc.ca>;
- This version of NFDB poly includes BC polys for 1917-2019;
- 2019 updates added in this update;
- Note that all years include small fires (< 200 ha); Most years > 2002 include fires > 0.1 ha; Most years 1950-2002 include fires > 10 ha;
- The BC fire perimeter data is published by the BC Ministry of Forests, Lands and Natural Resource Operations - BC Wildfire Service
 Licensed under Open Government License - British Columbia --
<http://www2.gov.bc.ca/gov/content/governments/about-the-bc-government/databc/open-data/open-government-license-bc>

AB:

- AB fire data updates downloaded from Alberta Wildfire website
<https://wildfire.alberta.ca/resources/historical-data/spatial-wildfire-data.aspx>
- This version of NFDB poly includes AB polys for 1931-2019;

- Missing years: 1937;
- 2018 and 2019 updates added in this update.
- Note that most years include small fires (< 200 ha); Most years > 1997 include fires > 0.1 ha; Most years 1950-1997 include fires > 10 ha; Most years < 1950 include fires > 100 ha.

SK:

- SK fire data updates provided by agency;
- This version of NFDB poly includes SK polys for 1945-2019;
- Missing years: 1951, 1954, 1965;
- 2019 updates added in this update;
- Note that most years > 1995 include fires > 50 ha; Most years < 1996 include large fires only (> 200 ha); Most years < 1980 include large fires > 1000 ha.

MB:

- MB fire data updates provided by agency;
- This version of NFDB poly includes MB polys for 1928-2019;
- 2019 updates added in this update;
- Note that most years include small fires (< 200 ha); Most years > 1997 include fires > 0.1 ha; Most years 1981-1997 include large fires only (>200 ha); Most years 1928-1980 include fires > 40 ha.
- Note: missing attributes (i.e. fireid, rep_date etc) for several years (1998-2003; and years < 1980)
polys for small fires < 150ha missing for several years between 1980-1997;

ON:

- ON fire data updates downloaded from Ontario LIO website
<https://www.javacoeapp.lrc.gov.on.ca/geonetwork/srv/en/main.home>
- This version of NFDB poly includes ON polys for 1963-2019;
- Missing years: 1959-1962, 1967, 1985;
- 2019 updates added in this update;
- Note that ON fire polygons include fires only greater than 40 hectares; Years > 1997 include fires > 40 ha; Years 1963-1997 include large fires only (> 200 ha);
- Note that the Ontario fire data has been produced by Natural Resources Canada under Licence with the Ontario Ministry of Natural Resources © Queen's Printer for Ontario, 2019.

QC:

- QC fire data updates downloaded from <https://www.donneesquebec.ca>
- This version of NFDB poly includes QC polys for 1972-2019;
- All historical fire records updated in this version;
- Note that years > 1993 include fires > 10 ha; Years 1973-1993 include fires > 100 ha;
- The Quebec open data licence agreement is available here
<https://www.donneesquebec.ca/fr/licence/#cc-by>

NS:

- No polygon data updates provided by NS for this version release;
- This version of NFDB poly includes NS polys for 1976-2019;
- Missing years: 1959-1975, 1977-1979, 1981-1983, 1985-1986, 1988-1989, 1993-1996, 2002, 2005, 2010;
- Note that years > 2010 include fires > 0.1 ha; Years 1976-2010 vary in what data is included.

NB:

- No polygon data updates provided by NB for this version release;
- This version of NFDB poly includes NB polys for 1980-2013;
- Missing years: 1959-1979, 1989, 1994-1995, 1997-2006, 2008, 2011-2012, 2014-2019;
- Note that years > 1997 are mostly unavailable; Years < 1996 includes mostly small number of large fires.

NL:

- No polygon data updates provided by NL for this version release;
- This version of NFDB poly includes NL polys for 1980-2016;
- Missing years; 1959-1979, 2008, 2015, 2017-2019;
- Note that most years include large fires only (> 200 ha)

PEI:

- There is no data for PEI in the NFDB

YT:

- YT fire data updates provided by agency for this version release;
- This version of NFDB poly includes YT polys for 1946-2019;
- Missing years: 1964, 1970;
- 2019 updates added in this update
- Note that most years > 1997 include small fires (< 100 ha); Most years 1946-1996 include fires > 100 ha.

NT:

- NWT fire data updates provided by agency for this version release;
- This version of NFDB poly includes NWT polys for 1965-2019;
- 2019 updates added in this update;
- Note that all years include small fires (< 200 ha); Most years > 2001 include fires > 0.1 ha;

PC:

- No fire data updates were provided by Parks Canada for this version release;
- This version of NFDB poly includes Parks polys for 1923-2015,

* PROCESSING ENVIRONMENT Version 6.2 (Build 9200) ; Esri ArcGIS 10.5.0.6491

CREDITS

The database is a large collaborative effort by all Canadian fire agencies. Links to the agency web sites can be found <http://cwfis.cfs.nrcan.gc.ca/ha/nfdb>, or can be found through the Canadian Interagency Forest Fire Centre (CIFFC) website at <http://www.cifffc.ca>.

We thank the many individuals who contributed to this effort, including fire crews, field personnel, photo interpreters, pilots, digitizers, and analysts. Compilation of the Canada-wide database was partially supported by the Canadian government programs of ENFOR (ENergy from the FORest), the Program on Energy Research and Development, the Climate Change Action Fund, and Action Plan 2000.

When using these data for mapping activities and analysis, research, evaluation or display, please acknowledged the source using the following citation: Canadian Forest Service. 2020. Canadian National Fire Database – Agency Fire Data. Natural Resources Canada, Canadian Forest Service, Northern Forestry Centre, Edmonton, Alberta. <https://cwfis.cfs.nrcan.gc.ca/ha/nfdb>.

ARCGIS ITEM PROPERTIES

- * NAME NFDB_poly_20200811
- * SIZE 1165.319
- * LOCATION file:///W-EDM-A144835
\\C\$\Projects\nfdb\nfdb_versions\current\2020_UPDATE\poly\NFDB_poly_20200811.shp
- * ACCESS PROTOCOL Local Area Network

[Hide Resource Details ▲](#)

Extents ►

EXTENT

VERTICAL EXTENT

- * MINIMUM VALUE -41.680100
- * MAXIMUM VALUE 2294.352300

EXTENT

GEOGRAPHIC EXTENT

BOUNDING RECTANGLE

- EXTENT TYPE Extent used for searching
- * WEST LONGITUDE -151.475479
- * EAST LONGITUDE -31.073202
- * NORTH LATITUDE 74.338657
- * SOUTH LATITUDE 36.018333
- * EXTENT CONTAINS THE RESOURCE Yes

EXTENT IN THE ITEM'S COORDINATE SYSTEM

- * WEST LONGITUDE -2326982.152712
- * EAST LONGITUDE 2981026.016509
- * SOUTH LATITUDE -716411.552459
- * NORTH LATITUDE 2761236.409951
- * EXTENT CONTAINS THE RESOURCE Yes

Hide Extents ▲

Resource Points of Contact ►

POINT OF CONTACT

INDIVIDUAL'S NAME John Little

ORGANIZATION'S NAME Government of Canada; Natural Resources Canada; Canadian Forest Service

CONTACT INFORMATION ►

PHONE

VOICE 825-510-1166

ADDRESS

TYPE

E-MAIL ADDRESS john.little@canada.ca

Hide Contact information ▲

POINT OF CONTACT

INDIVIDUAL'S NAME John Little

ORGANIZATION'S NAME Government of Canada; Natural Resources Canada; Canadian Forest Service

CONTACT'S POSITION Spatial Data Analyst

CONTACT'S ROLE custodian

CONTACT INFORMATION ►

PHONE

VOICE 825-510-1166

ADDRESS

TYPE physical

DELIVERY POINT 5320-122 Street

CITY Edmonton

ADMINISTRATIVE AREA Alberta

POSTAL CODE T6H 3S5

COUNTRY CA

E-MAIL ADDRESS john.little@canada.ca

[Hide Contact information ▲](#)

[Hide Resource Points of Contact ▲](#)

Resource Maintenance ►

RESOURCE MAINTENANCE

UPDATE FREQUENCY annually

[Hide Resource Maintenance ▲](#)

Resource Constraints ►

CONSTRAINTS

LIMITATIONS OF USE

The Data shall only be used for mapping activities and analysis, research, evaluation and display. The End-User agrees not to misrepresent or falsely modify the Data in any way. When the Data is displayed, in print, electronically, or otherwise, the source (i.e., Natural Resources Canada) must be acknowledged with the following citation: Canadian Forest Service. 2020. Canadian National Fire Database – Agency Fire Data. Natural Resources Canada, Canadian Forest Service, Northern Forestry Centre, Edmonton, Alberta. <https://cwfis.cfs.nrcan.gc.ca/ha/nfdb>.

Please note that an End-User Agreement is required for accessing and using these data. Please refer to this agreement for information regarding restrictions of use <https://cwfis.cfs.nrcan.gc.ca/downloads/EUA/End_User_Agreement_EN.html.php>

Note that the following agencies request reference to their specific data license agreements:

- BC- The BC fire perimeter data is published by the BC Ministry of Forests, Lands and Natural Resource Operations - BC Wildfire Service Licensed under Open Government License - British Columbia <<http://www2.gov.bc.ca/gov/content/governments/about-the-bc-government/databc/open-data/open-government-license-bc>>
- ON- The Ontario fire data has been produced by Natural Resources Canada under Licence with the Ontario Ministry of Natural Resources © Queen's Printer for Ontario, 2020;
- QC- The Quebec open data licence agreement is available here <<https://www.donneesquebec.ca/fr/licence/#cc-by>>

[Hide Resource Constraints ▲](#)

Spatial Reference ►

ARCGIS COORDINATE SYSTEM

* TYPE Projected

* GEOGRAPHIC COORDINATE REFERENCE GCS_North_American_1983

* PROJECTION NAD_1983_Lambert_Conformal_Conic

*** COORDINATE REFERENCE DETAILS**

PROJECTED COORDINATE SYSTEM

X ORIGIN -34655800
 Y ORIGIN -30001600
 XY SCALE 129952262.74881823
 Z ORIGIN -3168.6311939999996
 Z SCALE 1048576000488.281
 M ORIGIN -100000
 M SCALE 10000
 XY TOLERANCE 0.001
 Z TOLERANCE 0.001
 M TOLERANCE 0.001
 HIGH PRECISION true
 WELL-KNOWN TEXT PROJCS["NAD_1983_Lambert_Conformal_Conic",GEOGCS
 ["GCS_North_American_1983",DATUM["D_North_American_1983",SPHEROID
 ["GRS_1980",6378137.0,298.257222101]],PRIMEM["Greenwich",0.0],UNIT
 ["Degree",0.0174532925199433]],PROJECTION["Lambert_Conformal_Conic"],PARAMETER
 ["False_Easting",0.0],PARAMETER["False_Northing",0.0],PARAMETER["Central_Meridian",-
 95.0],PARAMETER["Standard_Parallel_1",49.0],PARAMETER
 ["Standard_Parallel_2",77.0],PARAMETER["Latitude_Of_Origin",49.0],UNIT["Meter",1.0]]

REFERENCE SYSTEM IDENTIFIER

* VALUE 0

Hide Spatial Reference ▲

Spatial Data Properties ►

VECTOR ►

* LEVEL OF TOPOLOGY FOR THIS DATASET geometry only

GEOMETRIC OBJECTS

FEATURE CLASS NAME NFDB_poly_20200811

* OBJECT TYPE composite

* OBJECT COUNT 59099

Hide Vector ▲

ARCGIS FEATURE CLASS PROPERTIES ►

FEATURE CLASS NAME NFDB_poly_20200811

* FEATURE TYPE Simple

* GEOMETRY TYPE Polygon

* HAS TOPOLOGY FALSE

* FEATURE COUNT 59099

* SPATIAL INDEX TRUE

* LINEAR REFERENCING TRUE

Hide ArcGIS Feature Class Properties ▲

Hide Spatial Data Properties ▲

Lineage ►

LINEAGE STATEMENT

The Canadian National Fire Database (CNFDB) is a collection of forest fire data from various

sources; these data include fire locations (point data) and fire perimeters (polygon data) as provided by Canadian fire management agencies (provinces, territories, and Parks Canada).

La Base nationale de données sur les feux de forêt du Canada (BNDFFC) réunit les données sur les feux de forêt compilées par diverses sources, y compris les données sur la position (données ponctuelles) et les périmètres (données polygonales) des feux telles que fournies par les agences canadiennes de gestion des feux (des provinces et des territoires et de Parcs Canada).

[Hide Lineage ▲](#)

Geoprocessing history ▼

Distribution ►

DISTRIBUTION FORMAT

* NAME Shapefile

TRANSFER OPTIONS

* TRANSFER SIZE 1165.319

ONLINE SOURCE

LOCATION <http://cwfis.cfs.nrcan.gc.ca/datamart>
 ACCESS PROTOCOL ftp
 NAME Canadian Wildland Fire Information System
 DESCRIPTION CWFIS Datamart
 FUNCTION PERFORMED download

[Hide Distribution ▲](#)

Fields ►

DETAILS FOR OBJECT NFDB_poly_20200811 ►

* TYPE Feature Class

* ROW COUNT 59099

FIELD FID ►

* ALIAS FID

* DATA TYPE OID

* WIDTH 4

* PRECISION 0

* SCALE 0

FIELD DESCRIPTION

Internal feature number.

DESCRIPTION SOURCE

ESRI

DESCRIPTION OF VALUES

Sequential unique whole numbers that are automatically generated.

BEGINNING DATE OF VALUES pre 1980

ENDING DATE OF VALUES post 2000

[Hide Field FID ▲](#)

FIELD Shape ▶

- * ALIAS Shape
- * DATA TYPE Geometry
- * WIDTH 0
- * PRECISION 0
- * SCALE 0

FIELD DESCRIPTION

Feature geometry.

DESCRIPTION SOURCE

ESRI

DESCRIPTION OF VALUES

Coordinates defining the features.

Hide Field Shape ▲

FIELD SRC_AGENCY ▶

- * ALIAS SRC_AGENCY
- * DATA TYPE String
- * WIDTH 10
- * PRECISION 0
- * SCALE 0

FIELD DESCRIPTION

Agency (province, territory, parks) from which the fire polygon data have been obtained.

BC - British Columbia

AB - Alberta

SK - Saskatchewan

MB - Manitoba

ON - Ontario

QC - Quebec

NS - Nova Scotia

NB - New Brunswick

NL - Newfoundland & Labrador

YT - Yukon

NT - Northwest territories

PC - Parks Canada

PC-BA - Banff (National Park)

PC-BP - Bruce Peninsula (National Park)

PC-BT - Batoche (National Park)

PC-CB - Cape Breton (National Park)

PC-CH - Cypress Hills (National Park)

PC-CT - Chilkoot Trail (National Park)

PC-EI - Elk Island (National Park)

PC-FO - Forillon (National Park)

PC-FR - Fort Rodd NHS (National Park)

PC-FU - Fundy (National Park)

PC-FW - Fort Walsh (National Park)

PC-GB - Georgian Bay Is. (National Park)

PC-GF - Gulf Islands (National Park)

PC-GH - Gwaii Haanas (National Park)

PC-GI - Grosse-ile (National Park)

PC-GL - Glacier (National Park)
 PC-GM - Gros Morne (National Park)
 PC-GR - Grasslands (National Park)
 PC-JA - Jasper (National Park)
 PC-KE - Kejimikujik (National Park)
 PC-KG - Kouchibouguac (National Park)
 PC-KL - Kluane (National Park)
 PC-KO - Kootenay (National Park)
 PC-LL - Lake Louise (National Park)
 PC-LM - La Mauricie (National Park)
 PC-LO - Louisbourg (National Park)
 PC-MI - Mingan (National Park)
 PC-NA - Nahanni (National Park)
 PC-PA - Prince Albert (National Park)
 PC-PE - Prince Edward Island (National Park)
 PC-PP - Point Pelee (National Park)
 PC-PR - Pacific Rim (National Park)
 PC-PU - Pukaskwa (National Park)
 PC-RE - Mount Revelstoke (National Park)
 PC-RM - Riding Mountain (National Park)
 PC-RO - Rocky Mountain House (National Park)
 PC-SL - St. Lawrence Islands (National Park)
 PC-SY - Saoyú-?ehdacho (National Historic site)
 PC-TI - Thousand Islands (National Park)
 PC-TN - Terra Nova (National Park)
 PC-VU - Vuntut (National Park)
 PC-WB - Wood Buffalo (National Park)
 PC-WL - Waterton Lakes (National Park)
 PC-WP - Wapusk (National Park)
 PC-YO - Yoho (National Park)

DESCRIPTION SOURCE

CFS

[Hide Field SRC_AGENCY ▲](#)

FIELD YEAR ►

- * ALIAS YEAR
- * DATA TYPE Integer
- * WIDTH 10
- * PRECISION 10
- * SCALE 0

FIELD DESCRIPTION

Year of fire as provided by individual agencies - Note: -9999 = unknown year, refer to decade

DESCRIPTION SOURCE

Agency/CFS

[Hide Field YEAR ▲](#)

FIELD FIRE_ID ►

- * ALIAS FIRE_ID
- * DATA TYPE String
- * WIDTH 16
- * PRECISION 0

* SCALE 0
FIELD DESCRIPTION
Agency fire ID

DESCRIPTION SOURCE
Agency

Hide Field FIRE_ID ▲

FIELD FIRENAME ►

* ALIAS FIRENAME
* DATA TYPE String
* WIDTH 50
* PRECISION 0
* SCALE 0

FIELD DESCRIPTION
Agency firename

DESCRIPTION SOURCE
Agency

Hide Field FIRENAME ▲

FIELD MONTH ►

* ALIAS MONTH
* DATA TYPE Integer
* WIDTH 10
* PRECISION 10
* SCALE 0

FIELD DESCRIPTION
Month of fire as provided by individual agencies

DESCRIPTION SOURCE
Agency

Hide Field MONTH ▲

FIELD DAY ►

* ALIAS DAY
* DATA TYPE Integer
* WIDTH 10
* PRECISION 10
* SCALE 0

FIELD DESCRIPTION
Day of fire as provided by individual agencies

DESCRIPTION SOURCE
Agency

Hide Field DAY ▲

FIELD DATE_TYPE ►

* ALIAS DATE_TYPE
* DATA TYPE String
* WIDTH 16

- * PRECISION 0
- * SCALE 0

[Hide Field DATE_TYPE ▲](#)

FIELD [DECADE ▶](#)

- * ALIAS DECADE
- * DATA TYPE String
- * WIDTH 10
- * PRECISION 0
- * SCALE 0

[Hide Field DECADE ▲](#)

FIELD [OUT_DATE ▶](#)

- * ALIAS OUT_DATE
- * DATA TYPE Date
- * WIDTH 8
- * PRECISION 0
- * SCALE 0

FIELD DESCRIPTION

Date fire was reported OUT as reported by individual agency

DESCRIPTION SOURCE

Source agency

[Hide Field OUT_DATE ▲](#)

FIELD [REP_DATE ▶](#)

- * ALIAS REP_DATE
- * DATA TYPE Date
- * WIDTH 8
- * PRECISION 0
- * SCALE 0

FIELD DESCRIPTION

Date associated with fire as reported by individual agency. Refer to DATE_TYPE for more categories of report dates.

DESCRIPTION SOURCE

Agency

[Hide Field REP_DATE ▲](#)

FIELD [SIZE_HA ▶](#)

- * ALIAS SIZE_HA
- * DATA TYPE Double
- * WIDTH 19
- * PRECISION 0
- * SCALE 0

FIELD DESCRIPTION

fire size (hectares) as reported in agency source data

DESCRIPTION SOURCE

Agency

[Hide Field SIZE_HA ▲](#)

FIELD [CALC_HA ▶](#)

- * ALIAS CALC_HA
- * DATA TYPE Double
- * WIDTH 19
- * PRECISION 0
- * SCALE 0

FIELD DESCRIPTION

fire size (hectares) as calculated using GIS, using Canada Albers Equal Area projection.

DESCRIPTION SOURCE

NRCan CFS

[Hide Field CALC_HA ▲](#)

FIELD [CAUSE ▶](#)

- * ALIAS CAUSE
- * DATA TYPE String
- * WIDTH 9
- * PRECISION 0
- * SCALE 0

FIELD DESCRIPTION

Cause of fire as reported by agency

DESCRIPTION SOURCE

Agency/CFS - individual agency specific classification normalized into NFDB standard classifications: L-(lightning), H (human), H-PB (prescribed burn), U (unknown)

LIST OF VALUES

VALUE U

DESCRIPTION Unknown cause. May represent where cause is undetermined, or when information is not provided by agency.

ENUMERATED DOMAIN VALUE DEFINITION SOURCE agency provided cause

VALUE L

DESCRIPTION Lightning casued fire

ENUMERATED DOMAIN VALUE DEFINITION SOURCE agency provided cause

VALUE H

DESCRIPTION Human caused fire

ENUMERATED DOMAIN VALUE DEFINITION SOURCE agency provided cause

VALUE H-PB

DESCRIPTION Prescribed burn (human caused)

ENUMERATED DOMAIN VALUE DEFINITION SOURCE agency provided cause

VALUE Re

DESCRIPTION Reburn. examine for original cause

ENUMERATED DOMAIN VALUE DEFINITION SOURCE agency provided cause

ACCURACY INFORMATION

EXPLANATION

some agencies provided additional information on cause, but these have been normalized to conform to the standards set for this national dataset.

[Hide Field CAUSE ▲](#)

FIELD **MAP_SOURCE** ▶

- * **ALIAS** MAP_SOURCE
- * **DATA TYPE** String
- * **WIDTH** 50
- * **PRECISION** 0
- * **SCALE** 0

FIELD DESCRIPTION

Source refers to WHAT data source was used to identify and map the fire perimeter. This attribute, together with the Method (which describes HOW the fire perimeter was created), provides insight into data quality and accuracy. Note this attribute is in the process of being reviewed for national standards.

DESCRIPTION SOURCE

Source agency / CIFFC / CFS

Hide Field MAP_SOURCE ▲

FIELD **SOURCE_KEY** ▶

- * **ALIAS** SOURCE_KEY
- * **DATA TYPE** String
- * **WIDTH** 50
- * **PRECISION** 0
- * **SCALE** 0

FIELD DESCRIPTION

Source_key may include keywords to provide additional information about the data source.

DESCRIPTION SOURCE

Source agency / CIFFC / CFS

Hide Field SOURCE_KEY ▲

FIELD **MAP_METHOD** ▶

- * **ALIAS** MAP_METHOD
- * **DATA TYPE** String
- * **WIDTH** 50
- * **PRECISION** 0
- * **SCALE** 0

FIELD DESCRIPTION

Map_Method refers to process used to create or derive the fire polygon (the HOW). This attribute, together with Source (which describes WHAT data source was used), provides insight into data quality and accuracy. Note this attribute is in the process of being reviewed for national standards.

DESCRIPTION SOURCE

Source agency / CIFFC / CFS

Hide Field MAP_METHOD ▲

FIELD **WATER_REM** ▶

- * **ALIAS** WATER_REM
- * **DATA TYPE** String
- * **WIDTH** 3
- * **PRECISION** 0

* SCALE 0

FIELD DESCRIPTION

Indicates if water areas have been removed from the polygon area.
Note this attribute is in the process of being reviewed for national standards.

DESCRIPTION SOURCE

Source agency

Hide Field WATER_REM ▲

FIELD UNBURN_REM ►

* ALIAS UNBURN_REM

* DATA TYPE String

* WIDTH 3

* PRECISION 0

* SCALE 0

FIELD DESCRIPTION

Indicates if unburned islands have been removed from the polygon area.
Note this attribute is in the process of being reviewed for national standards.

DESCRIPTION SOURCE

Source agency

Hide Field UNBURN_REM ▲

FIELD MORE_INFO ►

* ALIAS MORE_INFO

* DATA TYPE String

* WIDTH 250

* PRECISION 0

* SCALE 0

FIELD DESCRIPTION

Additional attributes provided by agency

DESCRIPTION SOURCE

Agency/CFS

Hide Field MORE_INFO ▲

FIELD CFS_REF_ID ►

* ALIAS CFS_REF_ID

* DATA TYPE String

* WIDTH 50

* PRECISION 0

* SCALE 0

FIELD DESCRIPTION

Reference ID

DESCRIPTION SOURCE

CFS

Hide Field CFS_REF_ID ▲

FIELD ACQ_DATE ►

* ALIAS ACQ_DATE

* DATA TYPE Date
* WIDTH 8
* PRECISION 0
* SCALE 0

FIELD DESCRIPTION

Date that fire data was aquired from agency

DESCRIPTION SOURCE

CFS

Hide Field ACQ_DATE ▲

FIELD CFS_NOTE1 ►

* ALIAS CFS_NOTE1
* DATA TYPE String
* WIDTH 200
* PRECISION 0
* SCALE 0

FIELD DESCRIPTION

Information noted by CFS

DESCRIPTION SOURCE

CFS

Hide Field CFS_NOTE1 ▲

FIELD AG_SRCFILE ►

* ALIAS AG_SRCFILE
* DATA TYPE String
* WIDTH 50
* PRECISION 0
* SCALE 0

FIELD DESCRIPTION

source data file provided by agency

DESCRIPTION SOURCE

CFS

Hide Field AG_SRCFILE ▲

FIELD CFS_NOTE2 ►

* ALIAS CFS_NOTE2
* DATA TYPE String
* WIDTH 200
* PRECISION 0
* SCALE 0

FIELD DESCRIPTION

Additional information noted by CFS

DESCRIPTION SOURCE

CFS

Hide Field CFS_NOTE2 ▲

FIELD POLY_DATE ►

* ALIAS POLY_DATE
 * DATA TYPE Date
 * WIDTH 8
 * PRECISION 0
 * SCALE 0

FIELD DESCRIPTION

Date fire polygon was captured, created or loaded by agency system

DESCRIPTION SOURCE

source agency

[Hide Field POLY_DATE ▲](#)

[Hide Details for object NFDB_poly_20200811 ▲](#)

[Hide Fields ▲](#)

Metadata Details ►

* METADATA LANGUAGE English (CANADA)
 METADATA CHARACTER SET utf8 - 8 bit UCS Transfer Format

SCOPE OF THE DATA DESCRIBED BY THE METADATA * dataset
 SCOPE NAME * dataset

* LAST UPDATE 2020-08-17

ARCGIS METADATA PROPERTIES

METADATA FORMAT ArcGIS 1.0
 METADATA STYLE North American Profile of ISO19115 2003
 STANDARD OR PROFILE USED TO EDIT METADATA NAP

CREATED IN ARCGIS FOR THE ITEM 2020-07-10 14:54:21
 LAST MODIFIED IN ARCGIS FOR THE ITEM 2020-08-17 10:41:39

AUTOMATIC UPDATES

HAVE BEEN PERFORMED Yes
 LAST UPDATE 2020-08-17 10:41:39

ITEM LOCATION HISTORY

ITEM COPIED OR MOVED 2020-07-10 14:54:21
 FROM C:\Projects\nfdb\agency_data\2019\working\NFDB_poly_20200711
 TO \\W-EDM-A144835
 \C\$\Projects\nfdb\nfdb_versions\current\2020_UPDATE\NFDB_poly_20200711

[Hide Metadata Details ▲](#)

Metadata Contacts ►

METADATA CONTACT

INDIVIDUAL'S NAME John Little
 ORGANIZATION'S NAME Government of Canada; Natural Resources Canada; Canadian Forest
 CONTACT'S POSITION Spatial Data Analyst
 CONTACT'S ROLE custodian

CONTACT INFORMATION ▶

PHONE

VOICE 825-510-1166

ADDRESS

TYPE physical

DELIVERY POINT 5320-122 Street

CITY Edmonton

ADMINISTRATIVE AREA Alberta

POSTAL CODE T6H 3S5

COUNTRY CA

E-MAIL ADDRESS john.little@canada.ca*Hide Contact information* ▲*Hide Metadata Contacts* ▲**Metadata Maintenance** ▶

MAINTENANCE

UPDATE FREQUENCY annually

Hide Metadata Maintenance ▲**Metadata Constraints** ▶

CONSTRAINTS

LIMITATIONS OF USE

The Data shall only be used for mapping activities and analysis, research, evaluation and display. The End-User agrees not to misrepresent or falsely modify the Data in any way. When the Data is displayed, in print, electronically, or otherwise, the source (i.e., Natural Resources Canada) must be acknowledged with the following citation: Canadian Forest Service. (*include current year here*). National Fire Database - Agency FireData. Natural Resources Canada, Canadian Forest Service, Northern Forestry Centre, Edmonton, Alberta. < http://cwfis.cfs.nrcan.gc.ca/en_CA/nfdb>

Please note that an End-User Agreement is required for accessing and using these data. Please refer to this agreement for information regarding restrictions of use

<http://cfs.nrcan.gc.ca/common/cwfis/End_User_Agreement_EN.html>

Note that the following agencies request reference to their specific data license agreements:

- BC- The BC fire perimeter data is published by the BC Ministry of Forests, Lands and Natural Resource Operations - BC Wildfire Service Licensed under Open Government License - British Columbia
<<http://www2.gov.bc.ca/gov/content/governments/about-the-bc-government/databc/open-data/open-government-license-bc>>
- ON- The Ontario fire data has been produced by Natural Resources Canada under Licence with the Ontario Ministry of Natural Resources © Queen's Printer for Ontario, 2019;
- QC- The Quebec open data licence agreement is available here

<<https://www.donneesquebec.ca/fr/licence/#cc-by>>

Hide Metadata Constraints ▲

Thumbnail and Enclosures ▶

THUMBNAIL

THUMBNAIL TYPE JPG

Hide Thumbnail and Enclosures ▲

FGDC Metadata (read-only) ▼